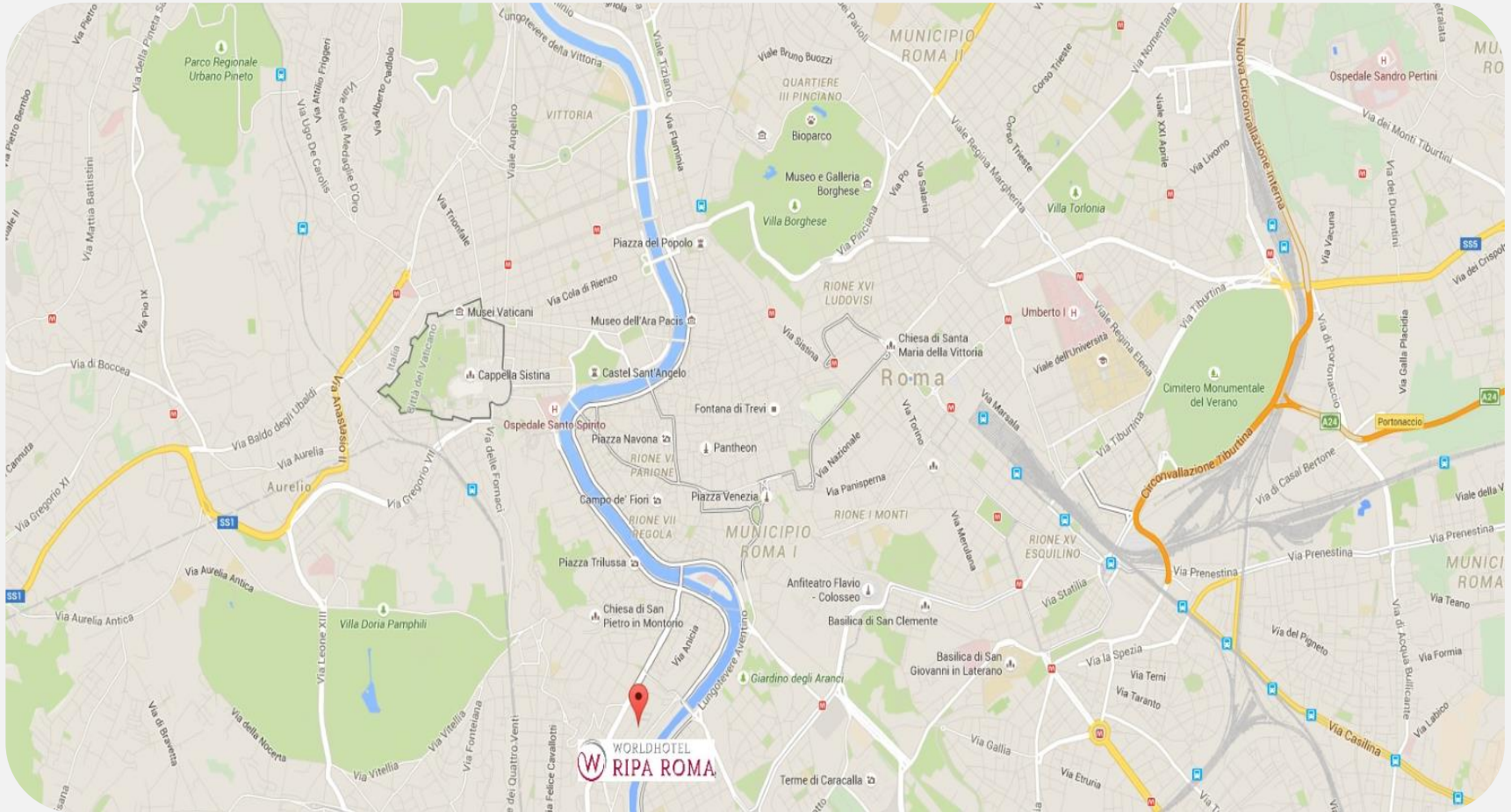


Where we are



Trastevere



Welcome to the heart of Rome. We await you in Trastevere, one of the most ancient districts of the Eternal City. A stone's throw from the Vatican and its Museum, the Imperial Forum, the Colosseum and Trevi Fountain.



Welcome to Roma



Our Hotel boasts 199 fresh and exciting rooms and suites, all specifically tailored to optimize light, space and comfort. Perfectly suited to both families and business travellers alike, the variety of rooms offers a range from the fashionably functional to the unusual and innovative.

Deftly combining light, airy spaces and an attention to detail, we have created a welcoming atmosphere that will make any guest reluctant to leave.





3 Junior suites
5 Family suites

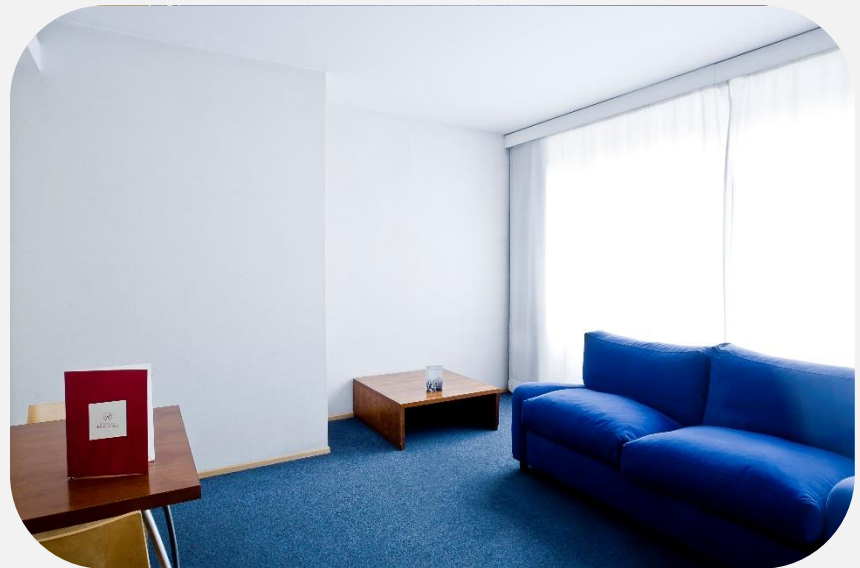
43 Executive rooms
66 Superior rooms
82 Standard rooms

Standard Room

Our standard rooms are provided with sofa bed to accommodate a family of 4 persons.
80% of the rooms come with balcony



Larger than the average standard room where guests can enjoy the sense of space with its clean lines and light, this room incorporates both efficiency and comfort to make your stay as pleasant as possible
35 sqm, sleeping and sitting area

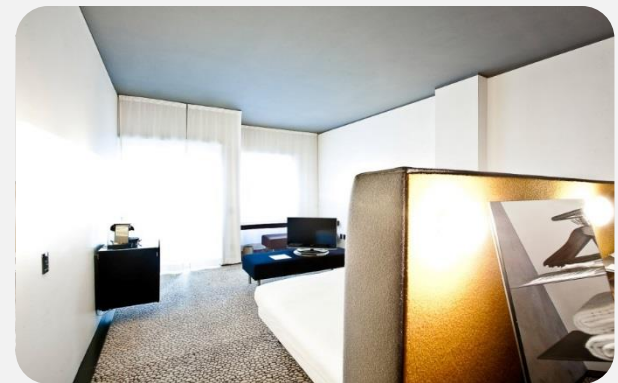


Superior room



With its innovative style and minimalist elegance, these rooms offer you the perfect relax from the hustle and bustle of the city. We cultivate an atmosphere of style.

Sophisticated, yet functional, our superior rooms include a wide range of amenities that cater to anticipate every possible need. Most come with balcony.



Executive Room



With a stunning view which can be enjoyed from the balconies of our top floors Worldhotel Ripa Roma's Executive rooms take attention to the needs of their guests.



Travellers will find their rooms equipped with everything from a Smeg Kettle to a satellite TV.

Executive room



The grey and white furnishings, the walls and flooring contribute to give life to a delicate atmosphere characterized by essential and sophisticated shapes.

The 7th floor by the end of March will be completely refurbished with new rooms designed by Simone Micheli.



Junior suites

Displaying luminosity and creativity, this room is widely admired for its unusual and thought-provoking design. This contemporary room recognizes the essential elements of light and space when it comes to creating an unforgettable experience for our guests. One different from the other, enjoy our jacuzzi and the amazing view on the River Tiber and Aventino Hill.



New Borromini Suite



Meeting rooms

- The Meetings & Events center is a combination of efficiency and harmony fitting a wide variety of needs:
- a 200-seat modular structure, a 60-seat conference room and 5 meeting rooms of 30 to 15 seats,
- Set on ground and 1st floor, they're all provided with natural light.

| MEETING CAPACITIES | BOARDROOM TAVOLO UNICO | CLASSROOM BANCHI SCUOLA | U-SHAPE FERRO DI CAVALLO | THEATRE PIATEA | CABARET TAVOLI TONDI | SQUARE METRES METRI QUADRI | HEIGHT ALTEZZA | LENGTH LUNGHEZZA | WIDTH LARGHEZZA | DAYLIGHT LUCE NATURALE | WIFI | AIR CONDITIONING ARIA CONDIZIONATA |
|------------------------------------|---------------------------|----------------------------|-----------------------------|-------------------|-------------------------|-------------------------------|-------------------|---------------------|--------------------|---------------------------|------|---------------------------------------|
| SALA KLIMT (MARINETTI +CHAGALL) | - | 80 | 50 | 200 | 60 | 250 | 2.46 2.93 | 30.13 | 5.7 7.44 | YES | YES | YES |
| SALA MARINETTI | 30 | 50 | 40 | 150 | 40 | 170 | 2.46 2.93 | 19.50 | 5.70 7.20 | YES | YES | YES |
| SALA CHAGALL | 20 | 25 | 25 | 60 | 20 | 80 | 2.70 | 10.53 | 6.00 7.44 | YES | YES | YES |
| SALASIRONI | 15 | 15 | 15 | 35 | 18 | 45 | 3.20 | 7.40 | 6.20 | YES | YES | YES |
| SALA MODIGLIANI | 20 | 25 | 25 | 60 | 20 | 80 | 2.60 3.60 | 13.00 | 7.10 8.25 | YES | YES | YES |
| 4 BREAK-OUT ROOMS | 10 | 15 | 12 | 15 | - | 50 | 2.50 | 10.00 | 5.00 | YES | YES | YES |
| WHITE SPACE | - | - | - | 150 | - | 281 | 2.96 | 17.49 | 16.12 | YES | YES | YES |

Kliment meeting room



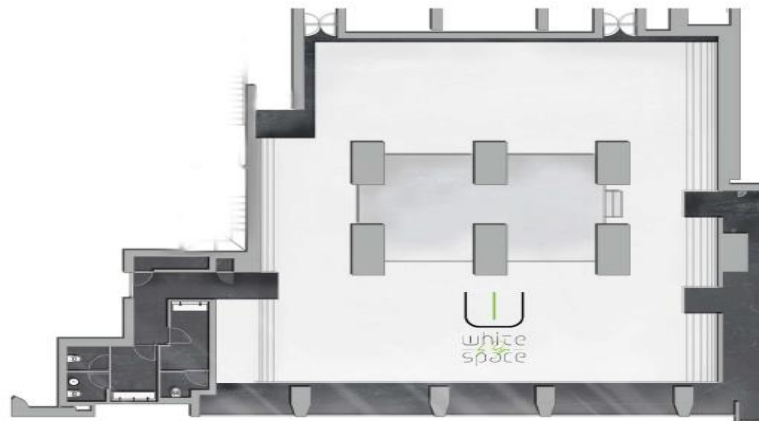
Sironi meeting room



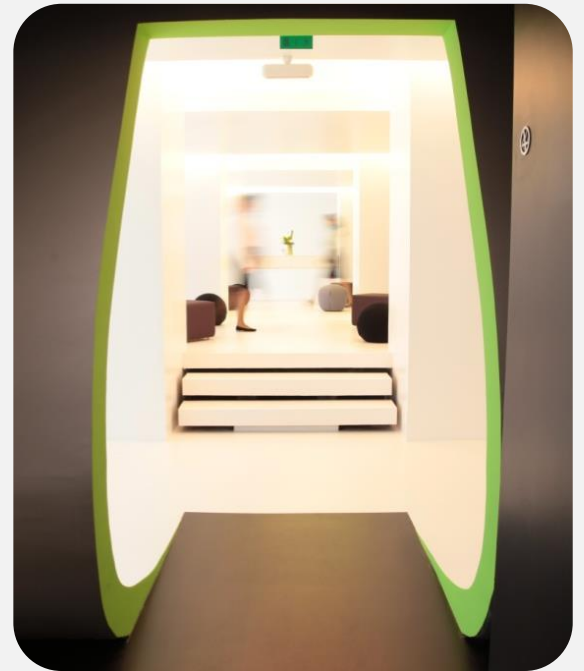


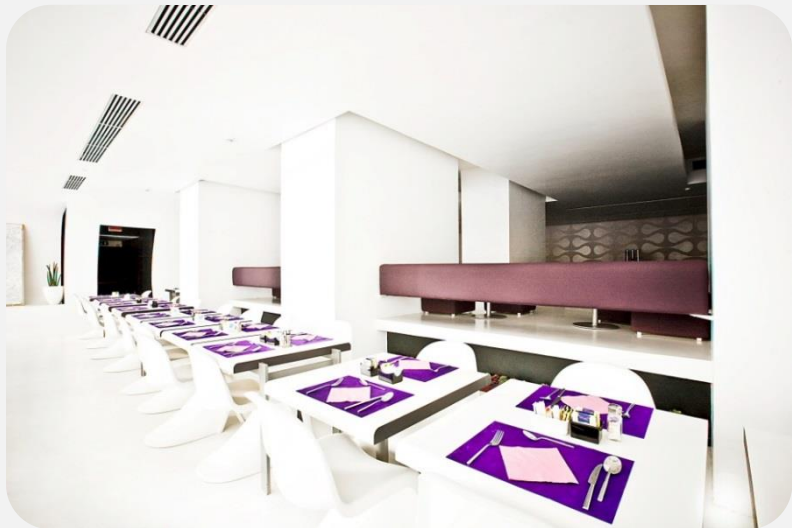
A space created to host high-level events in a refined homely setting: the ideal place for special occasions, anniversaries and cocktail parties, car launches.

White space serves haute cuisine to make each meeting memorable and unique.











Ripa Place, our newly refurbished restaurant, is a bistrot serving innovative roman cuisine to appeal and surprise our guests and friends. The minimal and chic atmosphere is enriched by a selected list of local wine.

Rome gets together at Ripa Place: offering international and traditional cuisine with unique flavors enhanced by impeccable service.





See you soon!



 WORLDHOTEL
RIPA ROMA

Worldhotel Ripa Roma

Via degli Orti di Trastevere, 3

00153 Rome|Italy

Visit us on worldhotelriparoma.com